

# WHAT IS AN FPA?



Cape Peninsula  
FIRE PROTECTION  
Association

“

Fire Protection Associations (FPAs) are community driven organizations that bring together landowners and stakeholders to proactively manage and reduce the risk of veldfires. FPAs and their members work collaboratively to prevent fires, coordinate firefighting efforts, and protect lives, property and the environment.

FPAs help their members to fulfil their legal responsibilities by providing advice and guidance on how to reduce the risk of veldfires. FPAs also help members by coordinating activities before, during and after fires, and over the period of the fire season.

**Join us in safeguarding our environment!**

**[www.cpfpa.org.za](http://www.cpfpa.org.za)**

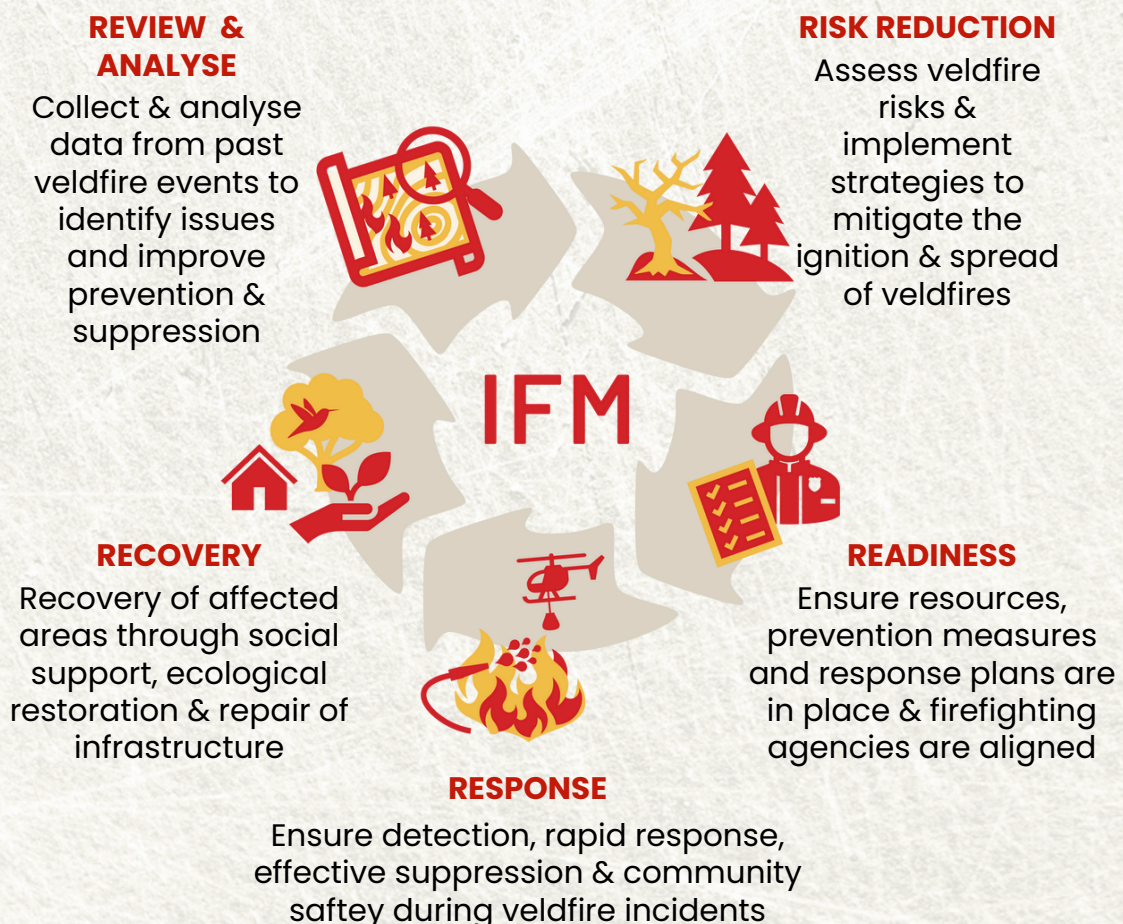




# WHAT IS INTEGRATED FIRE MANAGEMENT?

Integrated Fire Management (IFM) is a holistic approach to managing veldfires and mitigating their impacts on communities, nature and the economy.

## The Five R's of Integrated Fire Management





A photograph of three firefighters in full protective gear standing in front of a large, intense fire at night. The fire is bright orange and yellow, with thick smoke rising. The firefighters are silhouetted against the fire. In the background, some buildings and a fire truck with flashing lights are visible.

# OUR MANDATE

Guided by the principles of Integrated Fire Management (IFM), the CPFPA works to prevent and manage veldfires by providing landowners in the Cape Town Metropol with compliance guidance, advice on veldfire risk reduction and the coordination of veldfire response efforts.

## Support we provide to members

- Advice on compliance with legislation;
- Distributing daily Fire Danger Ratings during fire season;
- Facilitating firefighting training;
- Establish minimum standards for firefighting readiness;
- Providing information and advice on firefighting equipment and technology;
- Conducting a Basic Veldfire Risk Assessment of a new member's property on joining;
- Compiling and distributing a preseason Veldfire Response Plan per area;
- Assisting with the coordination of firefighting resources during a veldfire;
- Representing members at the Incident Command Post and/or Unified Command during a veldfire;
- Providing post-veldfire advice and support.



# OUR SERVICES

The CPFPA offers the following professional services to its members.

## **Drafting Management Plans**

- Veldfire Risk Assessment & Defensible Space Plans;
- Veldfire Management Plans;
- Invasive Alien Clearing Plans;
- Property Evacuation Plans;
- Post-veldfire Restoration Plan (erosion control & restoration planting).

## **Advisory Management Services**

- Post-veldfire Assessment & Analysis;
- Planning & coordination of fire breaks;
- Support with Open Burning Permit Applications;
- Coordination of burning operations (fuel reduction & ecological prescribed burning);
- Appointment of experienced contractors for IFM services.



# CONTACT US



## How to Join

Email: [gmanager@cpfpa.org.za](mailto:gmanager@cpfpa.org.za)



## Follow us on Social Media

Instagram: [@cape\\_peninsula\\_fpa](https://www.instagram.com/@cape_peninsula_fpa)

Twitter/X: [@CPFPA1](https://twitter.com/@CPFPA1)

Facebook: [@cpfpa](https://www.facebook.com/@cpfpa)

[www.cpfpa.org.za](http://www.cpfpa.org.za)

